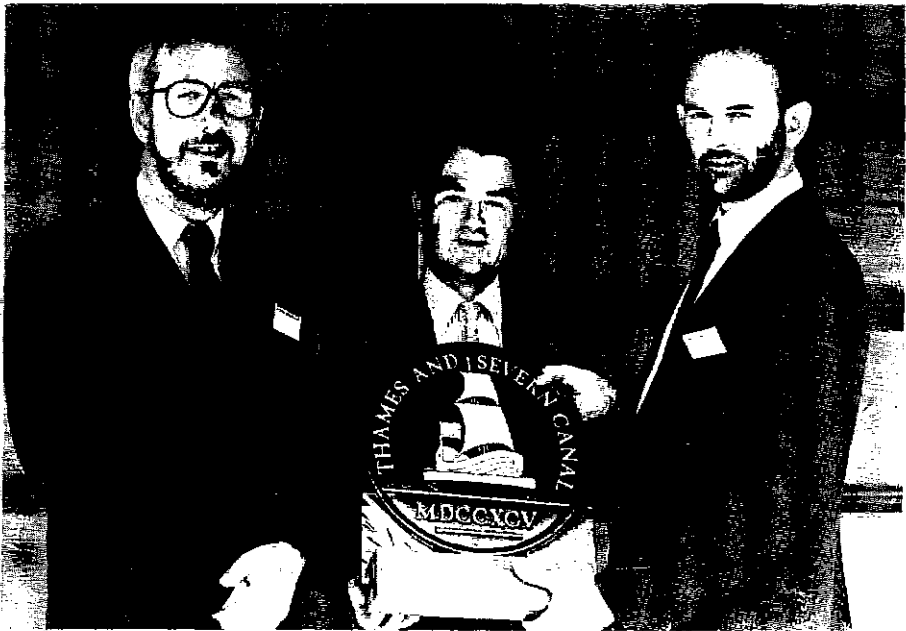


# Trow

THE OFFICIAL MAGAZINE  
FOR MEMBERS AND FRIENDS  
WORKING TO RESTORE THE  
COTSWOLD CANALS



NO 79 AUTUMN 1990 50 P

### COPY DATES

SPRING.....30th JANUARY  
SUMMER.....30th APRIL  
AUTUMN.....30th JULY  
WINTER.....30th OCTOBER

THE VIEWS & OPINIONS IN  
THIS MAGAZINE DO NOT  
NECESSARILY REPRESENT THE  
VIEWS & OPINIONS OF THE  
COTSWOLD CANALS TRUST

## Contents

RoyScot Finance Group	2
Thames End Branch	4
Western Branch	5
Branching Out	6
Field Officer's Report	7
THE COTSWOLD CANALS	8
Route Map	9
Structures Along The Canal	10
Gate News	12
Letters to the Editor	16
AGM Notice	17
Book Review	19

Published by the Cotswold Canals Trust  
Compilation and Layout by David Jowett  
Printed by Alan Mayo, Lewiston Mill, Brimscombe, Stroud, Glos.



# RoyScot Finance Group

---

## Report compiled by the TRUST COUNCIL

On Wednesday 11th July at a reception for both press and dignitaries, the sponsorship of the Cotswold Canals Trust by RoyScot Finance was announced.

Cheltenham employer RoyScot Finance Group plc is backing restoration of the Thames & Severn Canal and Stroudwater Navigation to the tune of £30,000. One of the first benefits to local people will be newly created amenity areas and canal walks around Stroud.

RoyScot Finance Group is part of The Royal Bank of Scotland Group and one of Britain's largest finance companies, employing 1200 people of whom 400 work in their Cheltenham administrative offices.

Announcing the sponsorship, RoyScot Finance Group Chief Executive Bob Riding, who is also a sailing and transport enthusiast, said, "I see this investment as getting the ball rolling, and we hope to put in further sums during the years ahead. I am particularly excited about the restoration because it will be opening up one of the Cotswold's most beautiful areas for the benefit of the local people".

The area adjacent to the Stroudwater Navigation at Newtown, Blunder and Pike Locks will be landscaped to form the Cotswold Canals Trail. This amenity area will be of major importance to both Stroud and the Cotswold Canals and will attract tourists travelling up and down the M5 motorway to stop and take a rest or picnic. RoyScot will be paying for display boards costing £2,000 each to mark the site and tell visitors about the history of the canals and nearby picturesque walks, plants and wildlife. Eventually six boards will be erected along the Cotswold Canals marking interesting places at Saul Junction, Eastington, Wallbridge and Sapperton Tunnel.

RoyScot Finance is the first commercial sponsor of the restoration. To help the Trust attract further vitally needed commercial sponsorship, RoyScot have used some of their sponsorship to pay for a professional publicity campaign by Insight Associates of Bristol. The superb results of their work can be seen in the new operational name of the Trust and logo and in the design of distinctive and attractive display boards.

In response Richard Attwood, Deputy Chairman, paid tribute to the public sector funding provided by Stroud District Council to restore and gate the Eastington Flight and that provided by Gloucestershire County Council, via the Stroud Valleys Project, to restore Upper Wallbridge Lock in the centre of Stroud. He also announced that he was confident that sponsors both from the public and private sectors would very soon provide many more of the distinctive and attractive display boards in addition to those provided by RoyScot Finance.

Richard Attwood went on to outline the forthcoming activity, in August, on the Eastington Flight when Newtown Lock will be gated and Pike Lock excavated. He also talked about the two engineering surveys to be made at the ends of the Cotswold Canals and the very positive interest shown in recent discussions with Cotswold District Council.



In conclusion Richard said of the sponsorship "The RoyScot donation, together with similar generous sums from Stroud District Council and Gloucestershire County Council, puts us much nearer our medium term aim of restoring navigation to Stroud, and several steps nearer to realising our ultimate aim to restore all 33 miles of the Cotswold canals to full navigation from the River Severn through to the River Thames."

# PRESS RELEASE

RoyScot Finance Group Reception Wednesday 11th July 1990

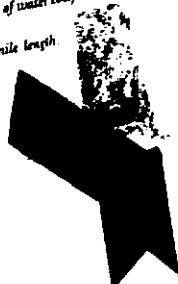
## THE COTSWOLD CANALS

*The Stroudwater and Thames & Severn canals traverse some of the most beautiful parts of the English countryside, rich in mills and flowing water for the once prosperous woollen industry.*

*Starting at Fromilode on the Severn, the so-called Stroudwater Navigation runs up to the Stroudwater Hills via Eastington, Ebley and Wallbridge. At Stroud, it becomes the Thames & Severn, rising through the spectacular "Golden Valley" to the summit of the hills, then along the 3817 yard Sapperton Tunnel — for many years the longest canal tunnel in Britain. Travelling down through open countryside to Cirencester and into the Thames Valley, the canal finally joins the Thames at Inglesham, near Lechlade.*

*The canals represent an outstanding engineering achievement for their time. In addition to the tunnel, 56 locks were constructed to cross the high hills, and a steam engine capable of lifting three million gallons of water every 24 hours was built specifically to maintain water levels across its 33 mile length.*

*FORWARDED TO THE PRESS*



# Thames End Branch

---

Report by **BILL KEAR & DERYCK WATKINSON**

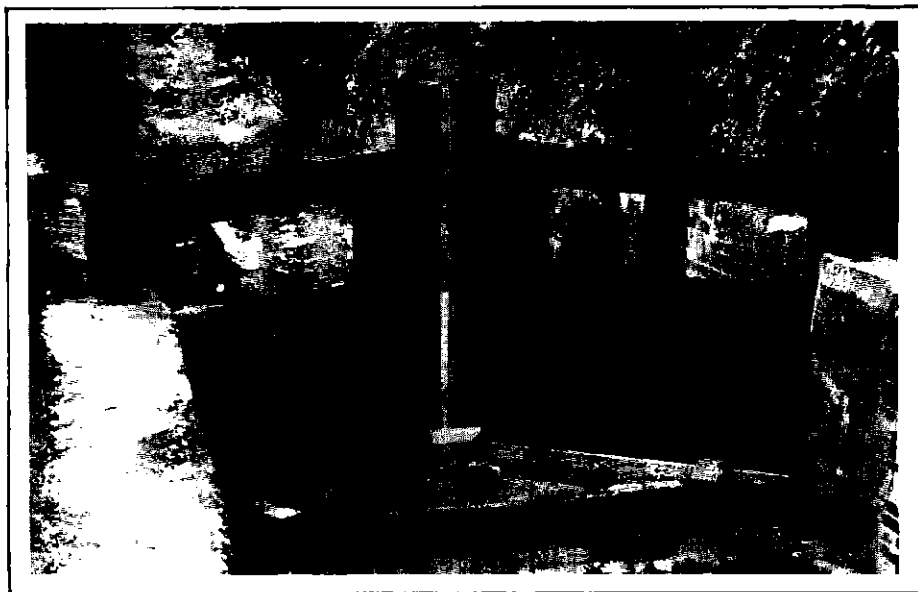
The regular work party crew has continued with their slow but sure progress in the construction and manufacture of ground paddle gear and the associated work in the paddle holes. It is hoped that shortly we shall be able to announce that the paddle gear replacement/refurbishment is complete.

Recent visitors to the lock will have noticed that in addition to our spanking new gates, Cerney Wick Lock now boasts a gleaming new cill, cast into position with renewable timber faces.

We fully expect that when the monsoon season opens later in the year, torrents of water will cascade playfully through the holes in the gates, which should act as a dam to keep the water level as high as possible for as long as possible.

Other jobs have included much overdue maintenance of towpath in the direction of of Latton and work on the wing walls at the Coates entrance to Sapperton Tunnel.

The Branch turned out in strength at the recent public meeting in Cirencester held with the purpose, among other things, of attracting support for the Trust's plans from people actually living around the Cirencester area. A gratifying number of people turned up and it seems highly likely that our profile in the vicinity of Cirencester is about to undergo a welcome lift.



The new Cerney Wick gates with work on the cill in progress.

# Western Branch

Report by KEN BAILEY

The past few months at the Western End have seen a varied selection of tasks completed. Firstly, one of the Trust's two mud barges, which was gently resting on the bottom at the Skew Bridge (near Stonehouse), was refloated. The barge had been moored there since the end of the MSC scheme and had filled with water. In order to pump it out, our Sykes 4" pump was moved on the back of the tug boat from Ryeford road bridge to the barge. Unfortunately, our initial investigation did not reveal a moorhen's nest amongst the reeds in the hold. Only when most of the water was removed did we hear the complaints of "Mum". A rescue was mounted and the nest complete with six chicks was removed and floated on a board amongst the reeds along the edge of the canal. Within an hour or so, "mum" was quite happily back on her mobile home!

At Ryeford, piling was put in above the swing bridge and the remains of the collapsing bank reinforcement has now been removed. The piling proved quite difficult in places as a large quantity of rubble had been pushed into the canal, which, even using a pneumatic drill as a hammer presents considerable resistance.

Unfortunately the new lock gates at Newtown were not fitted as we hoped due to a delay by Stroud District Council in approving payments. This meant that our gate builder took on other work and ours took second place. However, on the 4th June the top gates were delivered and have since been placed in the head of the lock for storage until the bottom gates are delivered and both sets are fitted.

During the next few months we have the IWA National Rally, the gates to be fitted in Newtown Lock (I hope this time!) and contractors excavating and rebricking Pike Lock. On the volunteer front we will be draining the pound between Pike Lock and Blunder and digging out the silt from Blunder Lock (29-30 September). We also will be digging out a slipway just above Pike Lock and moving the contents of the existing compound to a new location.

## JOHN E. GRIFFITHS

Freesia  
Meadow View Wharf  
Tettenhall Road  
Wolverhampton WV6 0JT

MORTGAGES · PENSIONS  
INSURANCE · INVESTMENTS

Appointed Representative  
of



PREMIUM LIFE  
ASSURANCE COMPANY  
LIMITED

Intro

TELEPHONE 0902 756906  
VODAPHONE 0836 547383.

**FREE QUOTES WITH NO OBLIGATION WHATSOEVER**

I WILL DONATE ONE THIRD OF ANY COMMISSION  
TO S. T&S. CANAL TRUST FUNDS (Please mention this advert)

# Branching Out

## TRUST COUNCIL REPORT

On Tuesday 10th July the Thames End Branch, which for many years has represented the interests of members in the eastern region, was enlarged to form the Summit and Thames End Branch at a public meeting at the Niccol Centre in Cirencester.

The increasing number of members along the length of the Cotswold Canals particularly in the Stroud and Cirencester areas has allowed the canals to be divided into three sections for membership purposes. However, the number of members in the Thames End area will not be sufficient to form a separate branch for a year or so.

The **Western Branch** covers the area from Saul Junction to Whitehall Bridge, in the Golden Valley. Whitehall Bridge is of historic significance because it marks the limit of navigation in 1927 when the Thames & Severn Canal was abandoned from Lechlade.

The **Summit Branch** extends to Claymeadow Farm, on the Siddington - South Cerney Road.

The **Thames End Branch** covers the remaining length of canal to Inglesham.

The public meeting was attended by some fifty persons, half of whom were Trust members. At the meeting Trust Deputy Chairman, Richard Attwood, took the audience on a visual meander along the Cotswold Canals by means of a slide show.

A "Question and Answer" session was followed by an appeal for people to form the enlarged branch committee with the existing members of the Thames End Branch. Twelve people stepped forward.

At the close of the evening, following great activity around the Trust Sales display, many more than half the persons attending were Trust members!

Details of the new branch will be published in the next edition of the Trow.

## The Clothiers Arms

1 Bath Road . Stroud . Gloucestershire

Resident Proprietors

Luciano & Aline Magalotti

Telephone Stroud

(0453) 763801



Free House

# Field Officer's Report

---

Field Officer **KEN BURGIN**

## **HALCROW REPORT**

The Trust has now received proposals from Sir William Halcrow and Partners Ltd. for a study covering the eastern part of the Thames & Severn Canal from the Thames at Inglesham to the Cotswold Water Park in the South Cerney area. The document is impressive, includes colour pictures and is designed to help raise the funds necessary to commission the study. It is not possible to go into much detail here but the main points to be covered are:

1. Engineering Feasibility, Water Supply and Cost.
2. Benefit Study and Economic Analysis.
3. Funding.
4. Environmental Impact Analysis.

The cost of the survey will be £30,000 + VAT but we hope that the study will form a firm foundation for the restoration of the whole of the eastern part of the canal. The aim is to treat this part of the canal as one large coherent project rather than working on it in a piecemeal fashion. - Part of the funding for the study has already been identified but further sponsors are required

## **COWGROUND BRIDGE**

An estimate for the repair of Cowground Bridge near Siddington has put the costs of full restoration of this once attractive accommodation bridge at £17,000. The bridge was condemned as unsafe and the towpath re-routed around rather than under it pending repairs. The Trust has found one potential source of funding for this project so far but we would still like to hear from other potential sponsors.

## **LATTON BYPASS**

The task of designing Latton Bypass has been given to Frank Graham & Partners. The Trust is already in contact regarding our need for a navigation culvert under the new road. The A419 crossing was identified as the single most expensive item east of Sapperton Tunnel in the 1976 Freeman, Fox Braine & Partners report.

## **MOVE THEM PIPES!**

If any members see a cable or pipe being laid and it is heading towards the canal (or canal route) whether in the road or not, contact me as soon as possible. Vast sums of money can be saved if provision for the future restoration of the canal is made during construction as well as avoiding inconvenience to the future users of that service.

Negotiations to move the MOD oil pipeline which runs north-south, west of the A38 are continuing. The pipe crosses the canal just above the waterline. Apparently the MOD don't want to pay to move it under the canal bed when the pipeline is shut down next year for repairs. I would have thought it would make an ideal job for the Royal Engineers as an exercise!

---



# THE COTSWOLD CANALS

---

For the benefit of newer members or if you have picked up this magazine from the IWA National Rally in Gloucester, here is a brief introduction to the Canal Trust. Readers may also find the map useful.

The "Canal" is actually two separate navigations. The Stroudwater Navigation left the River Severn at Framilode, south of Gloucester and met the Thames & Severn Canal end-on at Wallbridge in Stroud. This canal in turn climbed out of the Stroud Valleys to the summit level and the famous Sapperton Tunnel before a more gradual descent to the Thames near Lechlade.

On 12th May 1972, as a result of a meeting held in Stroud Subscription Rooms, a committee was formed to investigate the feasibility of restoring navigation on the Stroudwater Canal, from its junction with the Gloucester/Sharpness Canal to Wallbridge, Stroud. Thus the Stroudwater Canal Society was born.

At an early stage it was realised that the study was only part of a more important concept dealing with the possibilities of rejoining two of the oldest river navigations in the country - the Thames and the Severn.

The result was that on 16th April 1975, the Stroudwater, Thames & Severn Canal Trust was formed as a "Company limited by guarantee and not having a share capital". The newly formed company was also registered with the Charity Commissioners (Reg. No. 269721). In July this year the Trust announced that it was to adopt a new name - the "Cotswold Canals Trust"

The aims of the Cotswold Canals Trust are:-

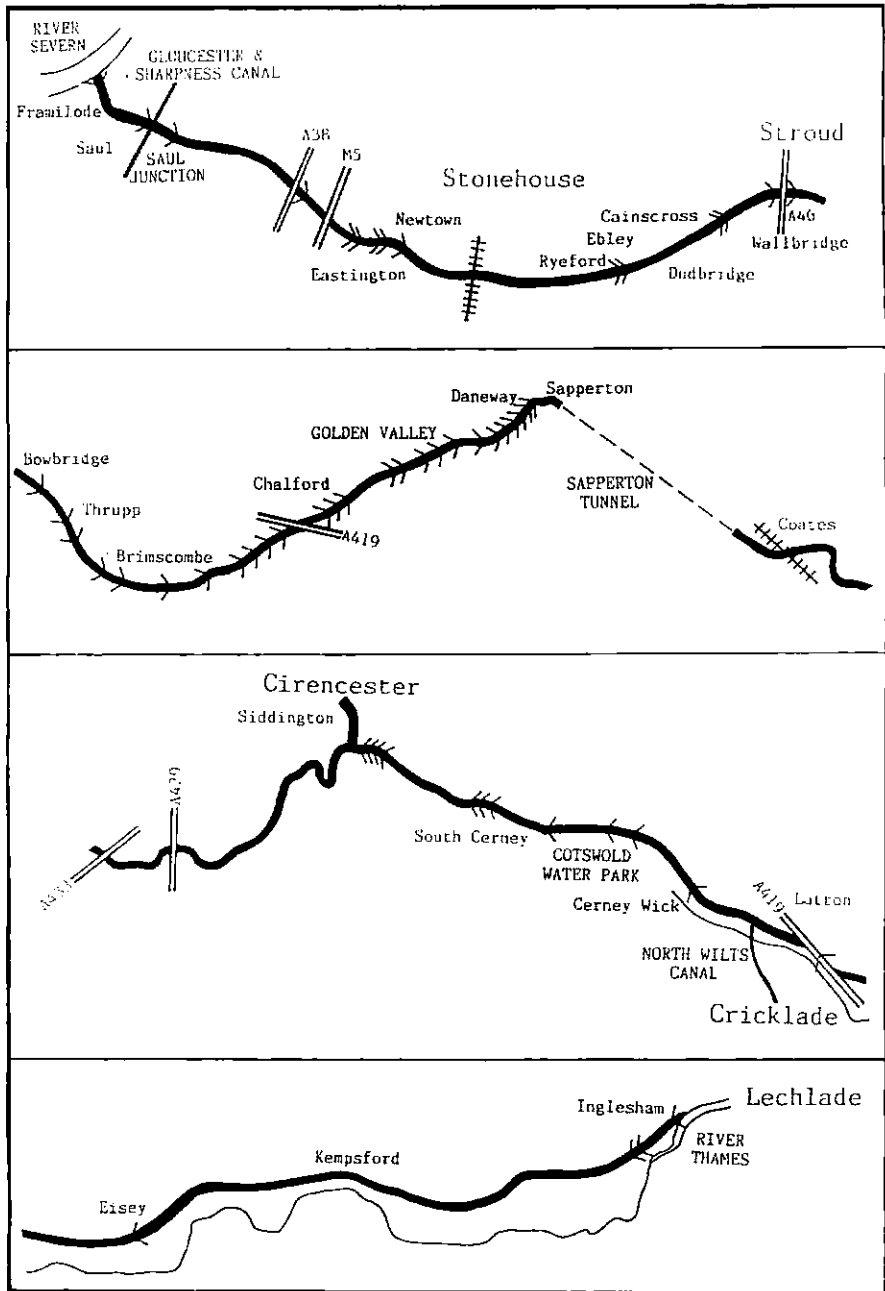
1. The preservation of the line of the Cotswold Canals (Stroudwater and Thames & Severn) and promotion of their use for recreation.
2. Promotion of the towpath as a long distance Right of Way.
3. Promotion of the restoration of the Stroudwater Navigation and the Thames & Severn Canal from Saul Junction to the tail of Hope Mill Lock.
4. Promotion of the restoration of the Thames & Severn Canal from the River Thames at Inglesham to the area of the Cotswold Water Park.
5. Ultimate restoration of these Cotswold Canals to navigation between Saul Junction and the River Thames.

The restoration of the waterway link to Stroud and eventually through the Cotswolds to the River Thames will provide a significant boost to Stroud as a tourist centre. Development of Gloucester Docks and the siting of the National Waterways Museum there will considerably increase the number of pleasure boats in the Stroudwater area. Potential benefits to Stroud from the spending power of visitors, marina and boat-hire charges will increase local prosperity.

If you are not yet a member of the Trust you will find the membership address at the back of this magazine. Why not join us!?

---

# The Route of the Canals



# Structures Along the Cotswold Canals



ABOVE: The Stroudwater Navigation passes St. Cyrs Church near Stonehouse  
BELOW: Nutshell Bridge, adjoined by an unusual cluster of buildings





ABOVE: Jubilee Bridge close to Griffin Mill Lock near Thrupp  
BELOW: Chalford Roundhouse can be found close to the A419 road



# Gate News

---

Report by KEN BAILEY

The 23rd June saw the appearance of another lock gate, this time built by Trust member John Bond some 15 years ago. The gate had been lying in storage on the bed of the canal above Griffin Mill Lock just to the east of Stroud. Dennis Sheen and Chris Jones (our Sales Manager) both donned wet suits for the operation and carried out the work of getting ropes round the gate in 4 feet of murky water. Although all timber with only a few small steel fittings, the gate had become very waterlogged and required ten five gallon drums in order to float. Once partly raised and hanging beneath the drums, it was possible to tow the gate through the weed up to Jubilee Bridge. It was at this point when we were able to gain vehicle access to the canal that we received an unexpected bonus. Mr Stevens, the land owner, brought his tractor and trailer along for us to winch the gate onto and take out along his field. John Bond was on the scene to see the reappearance of an "old friend" from below the surface.

Once the gate was loaded and moved to the farmyard attention was turned to the balance beam which had been sitting on the lock side. Once excavated the beam was fitted with flotation drums and winched into the canal to be towed to Jubilee Bridge where it was hitched to the back of my Land Rover and dragged out along to the farmyard.

On Sunday, the gate was transferred from the farm trailer to the Trust's own trailer and towed down through Stroud to Eastington. The gate was lowered into the head of Blunder Lock where it will remain until we fit it, probably towards Christmas. Some slight modifications are required to it and also the top mitre and pivots before fitting. If time and finance permit we hope to obtain the remaining timber which is required to complete the other gate and fit that at the same time.

Thanks to all those who came along and helped with a very smooth operation.



# Paper Round

Report by BILL EVILL

In recent years the Trust has been in the business of recycling paper. This has involved quite a few of our volunteers who have manned the paper skip in Stroud, collected from other areas and also had a store at Blunder Lock.

Unfortunately the price of paper has now slipped to around £4 a ton resulting in costs which outweigh income. It is therefore with regret that we have decided to cease the service. Volunteers will now be free to become involved in activities which will produce more benefits for the Trust such as operating the trip boats.

At the time of writing it is hoped that Stroud District Council will find alternative volunteers to man the skip. The Trust will still be recycling high grade computer paper which has a far greater scrap value. Please ring me early evenings on Stroud 766631 should you have significant quantities for collection.

Finally, thanks to all those people who have helped over the last two years. Although I don't like to single out people, I must give special thanks to Tim Ingham who spent most Saturdays on the skip. Thanks Tim!

Readers will already be aware of a "Stamp Bank" scheme operated by the IWA. Used postage stamps are sold for cash, whilst Green Shield Stamps, filling station stamps, Air Mile points and cigarette coupons are converted into goods for sale. The aim is to raise £1000 every year for IWA funds. Many Trust members already support the scheme and so could you by sending the above to: **WRG/IWA Stamp Bank, c/o 6 Spa Lane, Hinckley, Leics., LE10 1JB.** (or hand them in at Trust events).

## *Stroudwater Cottage*

Available for Weekends  
Midweek Breaks Longer Lets

Very Well Appointed  
Sleeps 4/5

Close to the Canal near Stonehouse



Telephone 0455 611508  
for details

A DONATION TO THE TRUST WILL BE MADE FOR EACH BOOKING RECEIVED AS A RESULT OF THIS ADVERT. PLEASE MENTION THE TROW.

# Membership Matters

---

## Membership Secretary RICHARD ATTWOOD

This quarter we are pleased to welcome the following new members:-

Mrs T Leyden, Stroud	Mr & Mrs NM Bird, Cheltenham
The Von Nida Family, Stroud	B & J Boss, Stroud
Mr & Mrs D Trollope, Stonehouse	Mr DJ Fielden, Todmorden Lancs
Mr CA Burnett, Northleach	Mr WK Harding, Northleach
Mr DM Johnson, Torquay	Miss AC Ruckert, Stroud
Mr NV Parker, Stroud	1st Highworth Scouts, Highworth
Mr NF Green, Wotton-under-Edge	Mr PD Grant, Lougfield Kent
Mr D Jones, Reading	DE Carr, Bristol
Mr RM Hollick, Saul, Glos	Mr D Mason, Stroud
Miss S Beadsmoore, Cirencester	Mrs J Mellor, Cirencester
Mr P Mellor, Cirencester	Mrs ME Allen, Cirencester
Mr HNG Allen, Cirencester	Mrs J Atkinson Malmesbury Wilts
Mr R Dixon, Cirencester	Mr J Nixon Cirencester
Mrs J Carroll, London	Mr & Mrs McCutcheon, Swindon
Mr CR Clarke, South Cerney	

The total number of members now stands at 570. This is a, most pleasing and further steady increase during the past quarter.

---

To:-

Membership Secretary, FREEPOST (GL65) P.O. Box 71, Stroud, Glos, GL6 7BR

PLEASE ENROL ME AS A MEMBER OF THE COTSWOLD CANALS TRUST. I enclose the first year's subscription.

NAME IN FULL.....BLOCK

ADDRESS.....CAPITALS

.....PLEASE

TEL NO..... SIGNED.....

OCCUPATION.....

AGE (if under 18)..... DATED.....

RATES:Adults £8. Family £10. Pensioner £5. Youth under 18 £2  
Affiliation (Schools, Clubs, etc) £10. Life £200.

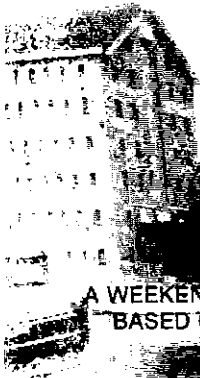
---



THE INLAND WATERWAYS ASSOCIATION PRESENTS

# GLOUCESTER '90

## National Waterways Festival



August 25th - 27th, 1990

A WEEKEND OF ENTERTAINMENT FOR THE WHOLE FAMILY  
BASED ON THE CANALS AROUND THE HISTORIC  
CITY OF GLOUCESTER

- BOAT TRIPS • BAR AND REFRESHMENTS
- DOG AGILITY COMPETITION
- SPECIAL ENTERTAINMENTS FOR CHILDREN
- FOLK MUSIC AND DANCING
- WATERWAYS TRADE SHOW • RIDE SIMULATOR
- LIVE CHESS COMPETITIONS
- CRAFT FAIR • CINEMA
- WATERWAYS FOR YOUTH A CHANCE TO  
TRY LOTS OF WATERWAYS ACTIVITIES

ADMISSION £1.00 (Children & Concessions)  
Includes Gloucester Waterways Museum Entrance Fee

**OPEN DAILY 10.00am-5.00pm**

**FREE CAR PARKING**



Sponsored by  
**VOLVO  
PENTA**



In association with  
Michael Stimpson & Associates, Birds Eye Walls, Rank Xerox, Gloucester City Council



# Letters to the Editor

---

Dear Sir,

My wife and I are fanatical canal explorers and the local canal takes some beating for interesting features. For example, Wallbridge Upper Lock on the Thames & Severn is in the throes of being restored by the Stroud Valleys Project. The lock is situated next door to Butts the builders merchant, and has for many years been an eyesore. The lock chamber has been used as a dumping ground for rubbish but now the chamber has been cleared of silt and the walls have been repaired. Go down to Wallbridge and have a look for yourself.

From the lock, you can walk eastwards down the towpath to explore the stretch of canal up to the East/West Bypass. The canal used to pass under Capels viaduct through the span which now bridges the new road. However, you will see that a new bridge has been incorporated to provide for future navigation. If you study the viaduct in more detail you will find that it also carries the railway over the River Frome.

I have enclosed a photograph of the work on Wallbridge Lock and hope you can print it.

TERRY WILLIAMSON Dursley, Gloucestershire.



# AGM

---

## NOTICE OF ANNUAL GENERAL MEETING

NOTICE IS HEREBY GIVEN OF THE 15TH ANNUAL GENERAL MEETING OF  
THE STROUDWATER-THAMES & SEVERN CANAL TRUST LTD  
TO BE HELD IN THE NICCOL CENTRE,  
BREWERY COURT, CIRENCESTER  
AT 2:30 PM ON SATURDAY, 24th NOVEMBER 1990.

### AGENDA

1. To receive the minutes of the 14th Annual General Meeting.
2. To receive the report of the Trust Council.
3. To receive the Accounts and Auditors report.
4. To agree the remuneration of the Auditors.
5. Discussion of future Trust activities.
6. To elect members to the Trust Council.
7. Any other business.

The Trust Sales Stand will be present together with a display of the Trusts' achievements.

### NOTICES

1. Notices of intending proposals for membership of the Trust Council must be lodged with the Secretary, in writing, not less than 14 clear days before the AGM, ie. to arrive by the latest post Friday 9th November 1990 together with the written agreement of the person proposed. Proposals must be sent to the Honorary Secretary, Cotswold Canals Trust., 10 Mount Pleasant, Bisley Old Road, Stroud, Glos, GL5 1NA.
2. Voting Rights - All classes of membership, except for Youth members, are entitled to one vote each member, whether collective or individual. Youth members have no voting rights since such members cannot be held responsible in law.
3. Any members entitled to be present and to vote at the meeting may appoint a proxy who must be a voting member of the Trust. The instrument, a legally correct proxy form, appointing a proxy is obtainable from the Honorary Secretary not less than forty eight hours before the time of the meeting.
4. Copies of the accounts will be available at the Annual General Meeting. Members who require full copies of the accounts, to be distributed at the start of the AGM should apply, in writing, not less than 14 days before the date of the meeting. Requests for accounts should be sent to the Treasurer, Cotswold Canals Trust, FREEPOST (GL 65), PO Box 71, Stroud, Glos, GL6 7BR

# Sales

## Sales Manager CHRIS JONES

So far this year, the Sales Roadshow has travelled to: Ebley Mill; Staverton; Hebden Bridge, Whiteshill, Calne, Stroud College, Cirencester, Stroud and Bath. We were there, where were you! However, if you were one of the ones that should have done but didn't, all is not lost. The best is yet to come. The IWA National Rally has arrived at Gloucester Docks. As if you didn't know the dates are Saturday 25th to Monday 27th August. Not only is it the nearest that this No. 1 Waterways Show will ever come to our canals (for the present!), but it will be the largest ever Canal Trust display. If you thought that Canal Trust Sales was all about a couple of trestle tables and a plastic sheet, then we are about to disappoint you. This will be BIG in Sales, Displays and all 12 Trust Council members will be there to answer your questions. Come and join us to share in the success of our ever growing Canal Trust.

### BOOKS

Around the Cotswold Canals - Ten Circular Walks*	£ 2.00
The Flower of Gloster (E. Temple Thurston)	£ 6.95
Restoring the Cotswold Canals*	50p
Strategy Document*	£ 2.00
S.T&S Canals in Old Photographs (Edwin Cuss & Stanley Gardiner)	£ 6.95
S.T&S Canals Towpath Guide (Michael Handford & David Viner)	£ 7.50
Thames & Severn Canal (Humphrey Household)	£ 6.95
Thames & Severn Canal (D. J. Viner)	£ 3.80
The TROW (All issues available)*	30p
Working Life on Severn & Canal (Hugh Conway-Jones)	£ 7.95

### CLOTHING\*

Acrylic Sweater with new embroidered logo (Bottle Green)	£14.00
Baseball Hat with printed logo (Green and White)	£ 3.75
Cotton/Acrylic Sweat Shirt with new embroidered logo (Grey)	£13.00
Cotton/Acrylic Sweat Shirt with printed logo (Green)	£10.00
Cotton Tennis/Sports Shirt with new embroidered logo (Jade)	£12.00
Tie with embroidered logo (Navy Blue)	£ 6.50
T-Shirt with printed logo (Green)	£ 4.50

### THIMBLES - all Hand-painted

Round House	£3.00	Buckby Can	£3.00	Cotswold Canals Trust*	£ 1.50
-------------	-------	------------	-------	------------------------	--------

### POTTERY\*

Standard Mug	£3.30	Half pint Tankard	£4.00	Pint Tankard	£ 6.20
--------------	-------	-------------------	-------	--------------	--------

\* Denotes items specially prepared for the Trust

All items are available by post from: CHRIS JONES, SALES MANAGER, THE COURTS, 27 WALTON ROAD, CLEVEDON, AVON, BS21 6AE. (Tel. 0272 875714)

Postage & Packing UK - 50p per order OVERSEAS - £5.00 per order

Cheques & Postal Orders should be made payable to "Cotswold Canals Trust"

# Book Review

---

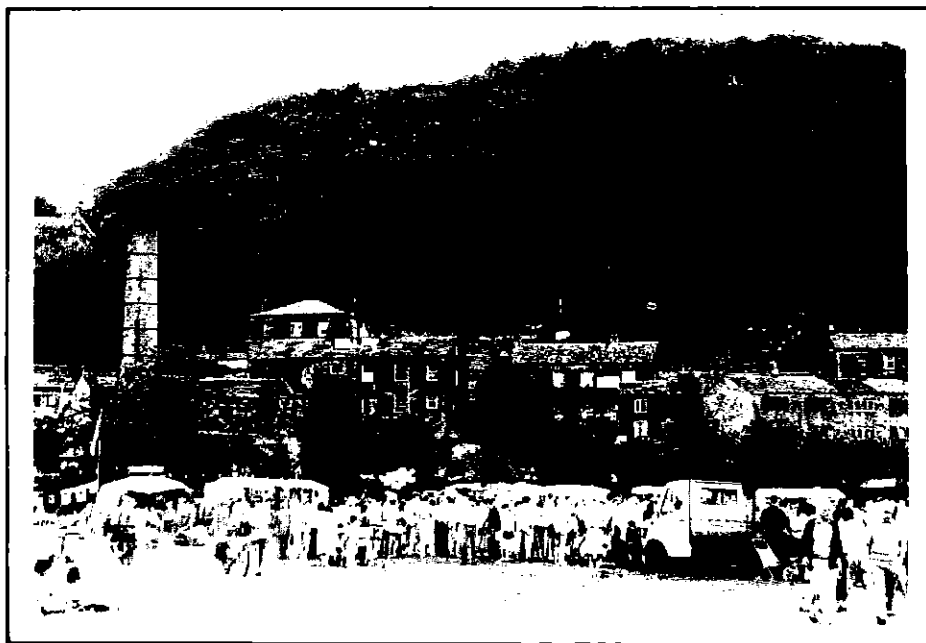
Review by REG PRENTICE

**A TOWPATH GUIDE** by Steven Parker and Richard Chester-Browne of the  
**MANCHESTER, BOLTON & BURY CANAL SOCIETY.**

Canal restoration is an old man's game but members of the Manchester Bolton & Bury Canal Society are entitled to dispute this out-dated statement. It may surprise many that Steven Parker, the prime mover behind the formation of the Society, was only 17 when the first meeting was held in July 1987

Together with Richard Chester-Browne he has produced a very readable booklet on the whole route of the North-Western waterway, although the walker could follow the advice of the authors by taking the ten sections one at a time. In the introduction to the guide, Trust Chairman, Margaret Fletcher says, "The combined talents of Steven and Richard have created a book which as well as being a very useful guide for anyone intending to walk the canal, is both enjoyable and informative to read, even for those unable (or unwilling!) to walk the whole route". From my position some one hundred and fifty miles away, I would definitely agree.

This guide is available from Chris Jones, Trust Sales for £2.00 + 40p P&P.



The Sales Roadshow hits Hebden Bridge (The one below the chimney!)

# Dates for your Diary

---

W/E 25/27 Aug	IWA Nat. Rally, Gloucester (Sales & Display)
W/E 25/26 Aug	Thames End Branch Working Weekend
W/E 1/2 Sep	Annual Inspection of Canals on foot
Mon 3 Sep	Western Branch Meeting
W/E 8/9 Sep	Stonehouse Traction Engine Rally (Sales Stand)
Tue 11 Sep	Thames End Branch Meeting
Tue 18 Sep	IWA Event - see below
Sat 15 Sep	Chalford Hill Fete (Sales Stand)
W/E 29/30 Sep	Thames End Branch Working Weekend
W/E 29/30 Sep	Special Work Party - Blunder Lock Excavation
Mon 1 Oct	Western Branch Meeting
Sun 7 Oct	Trust Open Day at Blunder Lock
Tue 9 Oct	Thames End Branch Meeting
Fri 19 Oct	IWA Event - see below
W/E 27/28 Oct	Thames End Branch Working Weekend
W/E 27/28 Oct	Special Work Party - Slipway near Blunder Lock
Tue 30 Oct	Copy date for Winter TROW
Mon 5 Nov	Western Branch Meeting
Tue 13 Nov	Thames End Branch Meeting
W/E 17/18 Nov	Thames End Branch Working Weekend
Thu 22 Nov	IWA Event - see below
Sat 24 Nov	TRUST A.G.M. (Nichol Centre, Cirencester)
Mon 3 Dec	Western Branch Meeting
Tue 11 Dec	Thames End Branch Meeting
Tue 18 Dec	IWA Event - see below
Wed 26 Dec!	WRG Winter Camp (Sapperton - until 31 Dec)

## IWA & FRIENDS OF THE MUSEUM EVENTS

(Nat. Waterways Mus. Schools Room,  
Gloucester at 7.30pm)

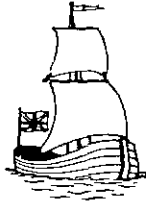
Tue 18 Sep	<b>HOW WE SAVED THE BARGE</b> - Video/Slidetalk by David McDougall
Fri 19 Oct	<b>RESTORATION OF THE ROCHDALE CANAL</b> - Talk by Brian Holden, Sec. Rochdale Canal Soc.
Thu 22 Nov	<b>THE TAME VALLEY CANAL</b> - Talk/Slides by John Foley
Tue 18 Dec	<b>CHRISTMAS SOCIAL</b> - Bring some refreshments!

## FRONT COVER PHOTO:

Bob Riding (Chief Executive of RoyScot Finance) receives a plaque from Richard Attwood (Deputy Chairman, Cotswold Canals Trust) and Richard Ollin (Chief Executive of Stroud District Council in recognition of their £30,000 sponsorship of the restoration scheme.

(L to R, Richard Ollin, Bob Riding, Richard Attwood)

---



#### DEPARTMENTS

MEMBERSHIP	FREEPOST (GL65)	P.O. Box 71. Stroud, Glos., GL6 7BR
PRESS & PUBLICITY	BERNARD DONOVAN	10 Mount Pleasant, Bisley Old Road, Stroud Glos., GL5 1NA (Stroud 0453 757541)
SALES MANAGER	CHRIS JONES	The Courts, 27 Walton Road, Clevedon, Avon, BS21 6AE (Clevedon 0272 875714)

#### SUMMIT & THAMES END BRANCH

CHAIRMAN  
SECRETARY  
TREASURER

New details to be announced in the next TROW

#### WESTERN BRANCH

CHAIRMAN	BOB SOMMER	45 Thoresbury Avenue, Tuffley, Gloucester, GL4 0TD (Gloucester 0452 507283)
SECRETARY	DAVID BAYLISS	Avonlea, 50 Stanley View, Dudbridge, Stroud, Glos. (Stroud 0453 753847)
TREASURER	GEORGINA BAYLISS	Avonlea, 50 Stanley View, Dudbridge, Stroud, Glos. (Stroud 0453 753847)
EVENTS ORGANISER	JEFFERY SHAW	The Cleeves, Nailsworth, Glos., GL6 0PA (Nailsworth 045383 3373)

#### WORKING PARTIES

WESTERN BRANCH	DOUG BLAKE	19 Stratton Road, Gloucester. (Gloucester. 0452 415843)
THAMES END BRANCH	NICHOLAS MELCHIOR	28 Grove Hill, Highworth, Swindon, Wilts., SN6 7JN (Swindon 0793 762510)

#### THE TROW

EDITOR	DAVID JOWETT	11 Upper Leazes, Stroud, Glos.
--------	--------------	--------------------------------